

A photograph of an industrial factory floor. The scene is dominated by large, blue-painted metal machinery, likely part of a manufacturing or processing line. In the foreground, a metal grate floor is visible. To the right, a bright orange-red glow from a heat source, possibly a furnace or a welding process, is partially obscured by a large plume of white steam or smoke that rises from the machinery. The background shows more industrial equipment and a building structure with a yellow door. The overall atmosphere is one of active industrial production.

CTS MAKİNA A.Ş.

**A GLOBAL PARTNER FOR KEY INDUSTRIES THAT SHAPE THE WORLD
AS AN INTERNATIONAL OPERATING INDUSTRIAL EPC**

SEPT 2021



- CTS MAKİNA A.Ş. is a globally leading supplier of **plants, equipment and services for the Metal-Working and Steel Industries, Hydropower Stations and Industrial Sectors** as well as “**TURN-KEY**” solutions.
- Specialized in; Metalworking, Machining, Pressing, Cutting, Moulding, Welding, On Board Tubing, Tube bending, Assembly, Coating, Powder Coating, Aluminum and plastic injection, Assembly and Packaging
- Covers the complete design and manufacturing activities for green-field projects as well as revamping/upgrading of existing plants and equipment
- Designs, fabricates and commissions **machines, process equipment and production lines** for the **world’s largest industrial players**
- 85% of manufacturing is exported
- **25.000 tons annual capacity of manufacturing**

Headquarters: Izmir, Turkey

Establishment Year: 2006

Global Presence: 2 facilities for Machining and Welding for tailor made products, 1 facility for Automation, Service/Sales Companies Worldwide. 2 regional offices in Sudan and Spain.

BUSINESS AREAS

IRON & STEEL SECTOR



Bar Mills
Section Mills
Wire Rod Mills
Electrical Arc Furnace
Ladle Furnace
VD and VOD Units
Continuous Casting
Machines
Modernization
Spare Part Services

POWER PLANTS



Hydro Components
Kaplan Turbine
Pelton Turbine
Francis Turbine
Hydro and Turbo
Generators Mechanical
and Welded Parts

AUTOMOTIVE



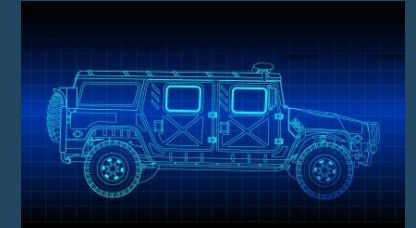
Manifolds
Injector Holders
Regulators
Shafts
Filter Primer Tops
Covers
Valves
Cylinder gate blocks
Brackets
Connectors

BULK MATERIAL AND HANDLING SYSTEMS



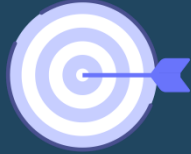
Industrial Silos
Chain Bucket Elevators
Belt Bucket Elevators
Belt Conveyors
Chain Conveyors
Screw Conveyors
Steel Constructions

DEFENCE INDUSTRY



Equipment of multi-
purpose armored
vehicles
Tactical wheeled vehicles
parts

VISION, MISSION AND VALUES



VISION

In our chosen markets, we are global leaders with a passion for creating engineering solutions. As technology and quality leader, we create sustainable value for our customers, thus ensuring the continuation of our long-term profitable growth.



MISSION

The first aims are being the most reliable resource for our customers in the fields of design, engineering, production and consultancy and simultaneously, being aware of the rapidly developing technological needs of the sector. To respond to these with the greatest knowledge and enthusiasm to be global market leader in manufacturing sector.



VALUES

- Customer Orientation
- Competitiveness
- Target Oriented
- Durability
- Agility
- Innovativeness
- Productivity
- Sustainability

LONG-TERM PROFITABLE GROWTH

- Focusing on markets with high growth rates
- Expansion of product portfolio through organic growth (R&D) and acquisitions
- Achieve annual sales growth averaging 5-8% depending on market growth and acquisitions

CUSTOMER SATISFACTION

Our systems are designed according to the 3Q concepts:

- **Quality** - Excellence in quality and product quality certification
- **Quantity** - High productivity
- **Quickness** - Quick response to market demand

**GOAL :
GLOBAL
MARKET
LEADER**

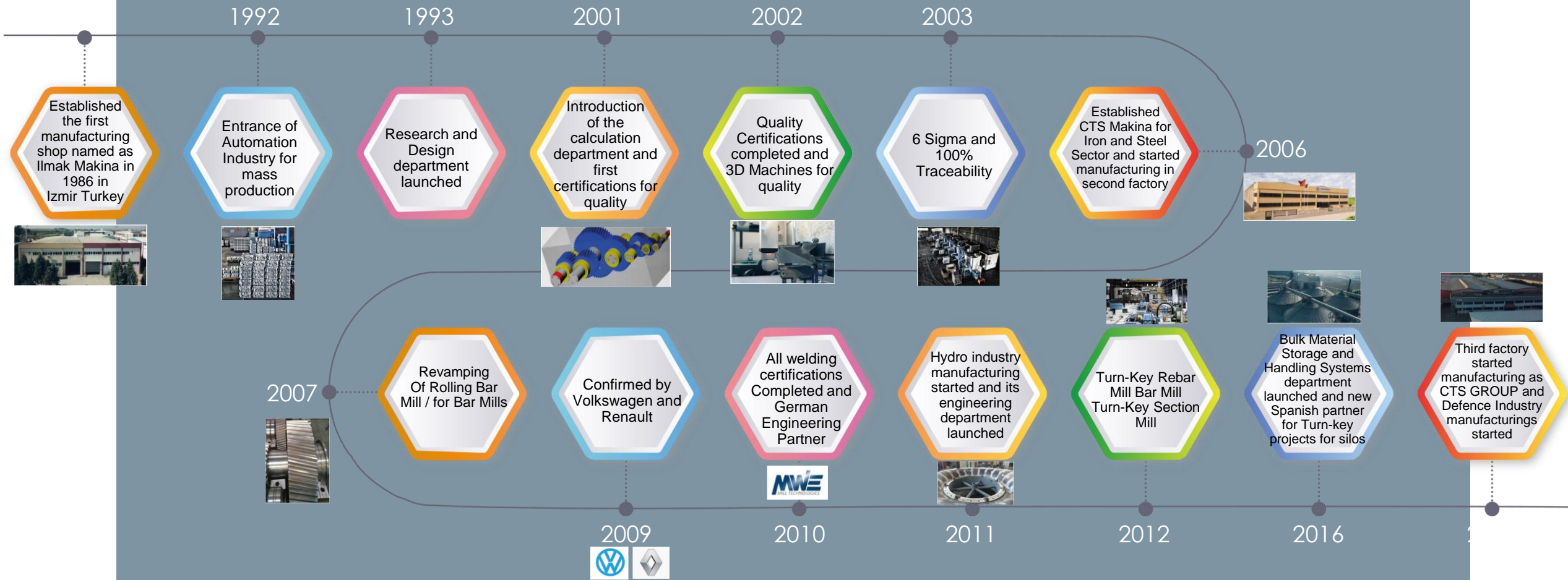
TECHNOLOGICAL AND COST LEADERSHIP

- Become preferred supplier by virtue of technology, quality and references
- Development of innovative and sustainable technologies through intensive R&D
 - Offering best ROI for our customers

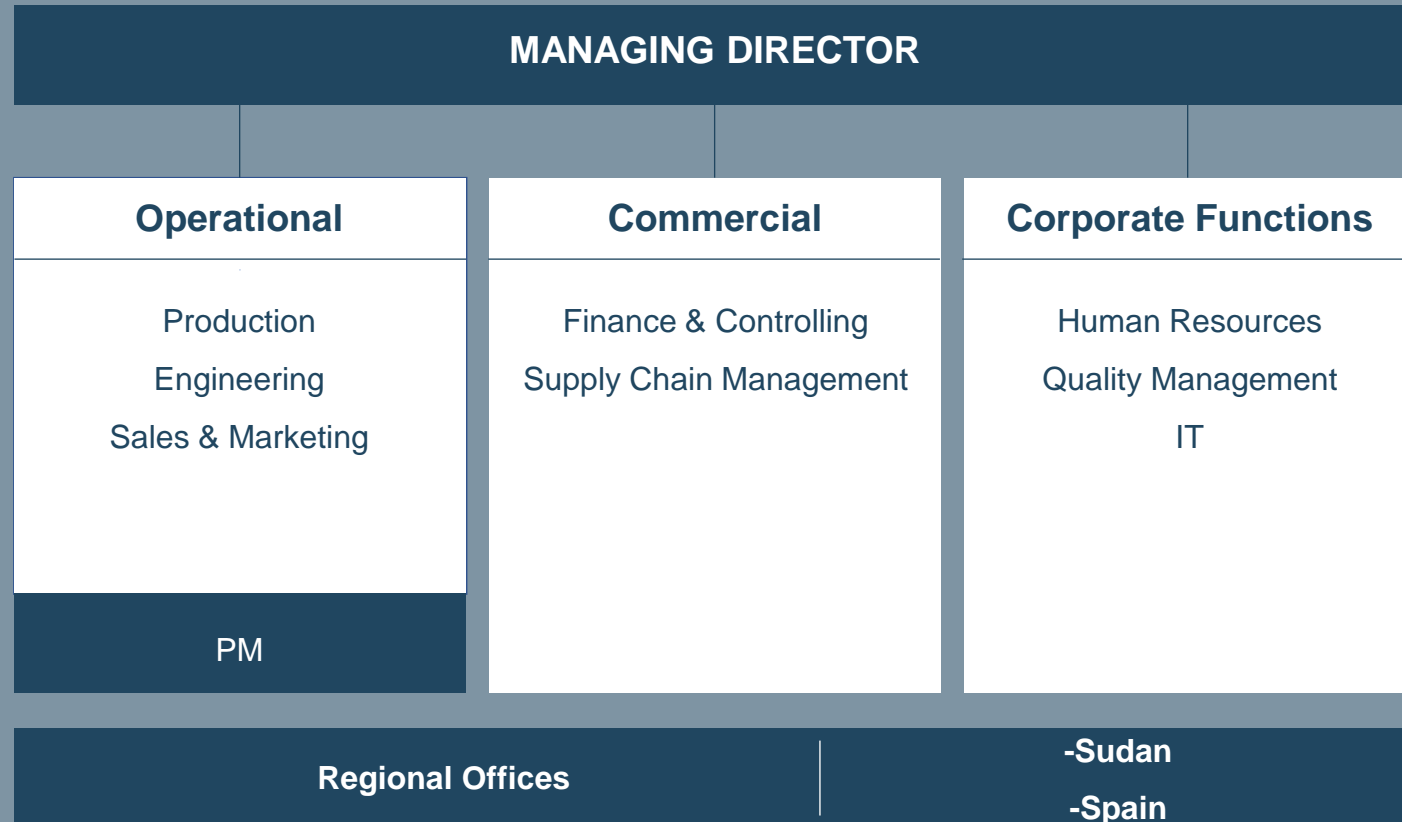
EXTEND MARKET POSITIONS

- Serving markets with long-term and sustained growth potential
 - Extending existing position in Sudan, Africa and Europe
- Making use of the growth and sales opportunities in the emerging markets of America and Asia

MILESTONES



ORGANIZATIONAL CHART



Required in the technical drawings;

- Dimensional checks
- Hardness control
- Dry film thickness of the coating etc.

can be measured by CTS Makina's experiences staff.

The quality department is able to apply the following NDT methods for welding process with its certificated staff (Level-2 technicians) as per EN 9712;

- Visual Test (VT)
- Penetrant Test (PT)
- Magnetic Particle Test (MT)
- Ultrasonic Test (UT)

For manufacturing progress, PQR as per EN ISO 15614 and WPS as per EN ISO 15609 are followed strictly.

All welding activities are carried out by our experienced welding operators who are certified as per EN ISO 9606 and ISO 14732.

NDT activities are carried out by our own inspectors who has certified as per EN ISO 9712.



CERTIFICATIONS



All fabrication and erection works are carried out by our experienced engineers and technical personnel under international standards, clients' quality requirements and according to given certificates and licenses which we comply with:

- ISO 9001:2015 - Quality Management System,
- ISO 14001:2015 - Environmental Management System,
- ISO 45001:2018 – Occupational Health and Safety Management System,
- EN ISO 3834-2:2005 - Fusion Welding of Metallic Materials Management Quality Requirements System,
- TS EN 1090-2:2008 - Technical Requirements for the Execution of Steel Structures Welding of railway vehicles and components,
- EN 15085-2:2007 Railway applications. Welding of railway vehicles and components,
- Facility Security Clearance Certificate, Ministry Of National Defence Of The Republic Of Turkey



REFERENCES



ALSTOM



SMS group



SIEMENS

voestalpine



İZMİR DEMİR ÇELİK SANAYİ A.Ş.



BMC

MecALAC



ANADOLU EFES



شرکت فولاد بسوز ایرانیا





Finding solutions to any challenge!

CTS GROUP is reliable partner for production with strong focus on;

- **Manufacturing (Welding and Mechanical)**
- **Workshop Assembly and On Board Piping**
 - **Cutting**
 - **Automation**
 - **Desing and Engineering**
 - **Training and Consulting**
 - **Erection and Civil Works**
- **Project (QA/QC) and Site Management**
 - **Spare Parts Services**

WELDING PRODUCTION

CTS GROUP ensures top welding quality with employees who are experts in welding many different materials together.

Typical assemblies are frames, traverses, (transmission) housings, but also rolls (on request with contract welding) and welded spur gears made of case hardening steel and tempered steel.

Our production shops hold the manufacturer's qualification for welding works according to certificate EN 1090-2 (comprehensive qualification certificate) as well as the extension according to DIN 15018.

It's an approval which confirms that we meet all safety and quality assurance requirements for welding steel constructions.

MECHANICAL PRODUCTION

CTS GROUP's machine tool park is tailored to the specific requirements of heavy plant construction. Included on the shop floor are machining centers, turning and milling centers, center lathes, boring mills, and gantry-type portal milling machines for machining large parts as well as modern grinding machines that produce high surface qualities.

Our state-of-the-art machines enable us to process complex cast, forged, or welded parts in a large range of dimensions and weights.

Apart from performing individual work processes, we also produce complete components according to your drawings or CAD models, taking care of materials management and procurement.

WORKSHOP ASSEMBLY

According to the order, teams pre-assemble or fully assemble the various products in several assembly halls. It also covers the assembly of component groups or complete machines including electric cabling, piping and commissioning.

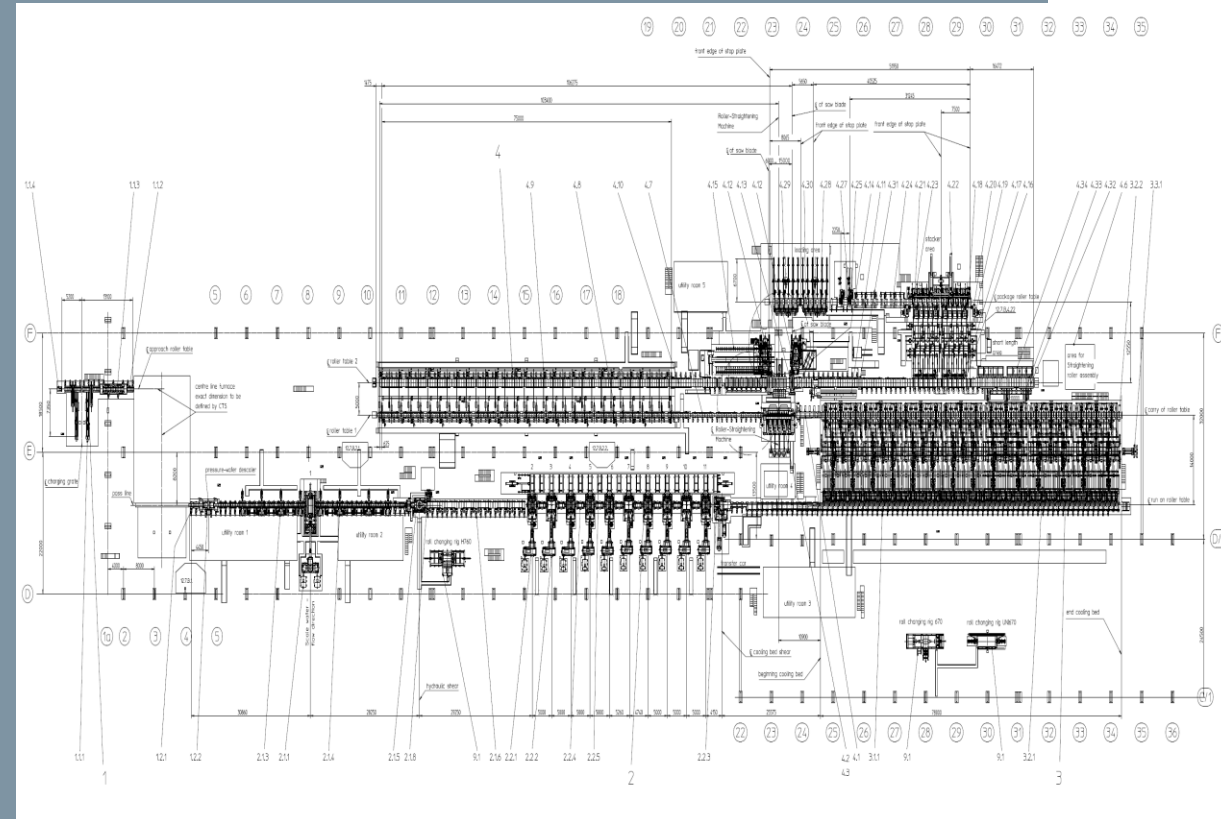
Working to your orders, we assemble heavy parts and machines as well as e.g. transmission and drive components, pump stations, and hydraulic control systems, including coating and preparation for shipping.

CTS GROUP performs projects and engineering services incorporating contemporary high technology for general engineering

By co-operating with international companies in the application of up to date technologies, has already upgraded its rank as one of the leading companies in Turkey in the field of heavy machinery. CTS GROUP performs projects and engineering services incorporating contemporary high technology for general engineering and design of steel mill equipment, cranes, material handling equipment and also cement industry and general machinery softwareS. CTS has an extensive knowledge of the Iron & Steel sector by co-operating with international companies applying up to date technologies. CTS has successfully executed major projects from feasibility through to site support to overseas fabrication, installation and commissioning via working with some of largest Iron and Steel companies in the world.

CTS' engineering department aims the following main objectives:

- Minimum operation and maintenance costs
- Optimal utilization of spaces inside and outside the projects
- Automation operation 'hands off' type
- Environmental respectfulness
- Maintenance friendly operation



TRAINING AND CONSULTING

We provide training to engineers, technicians and qualified personnel both at home and abroad

Our experience has proven that engineering and know-how transfer is essential for trouble free and successful operation of a newly designed system.

The main target of training on the customer's site is to familiarize their personnel with hands-on operation of the supplied machines and equipment.

The operators and maintenance personnel are trained step by step to prepare them for successful operation of the equipment.

Training services are given in the following subjects:

- Operation,
- Mechanical & electrical maintenance,
- Quality control,
- Automation

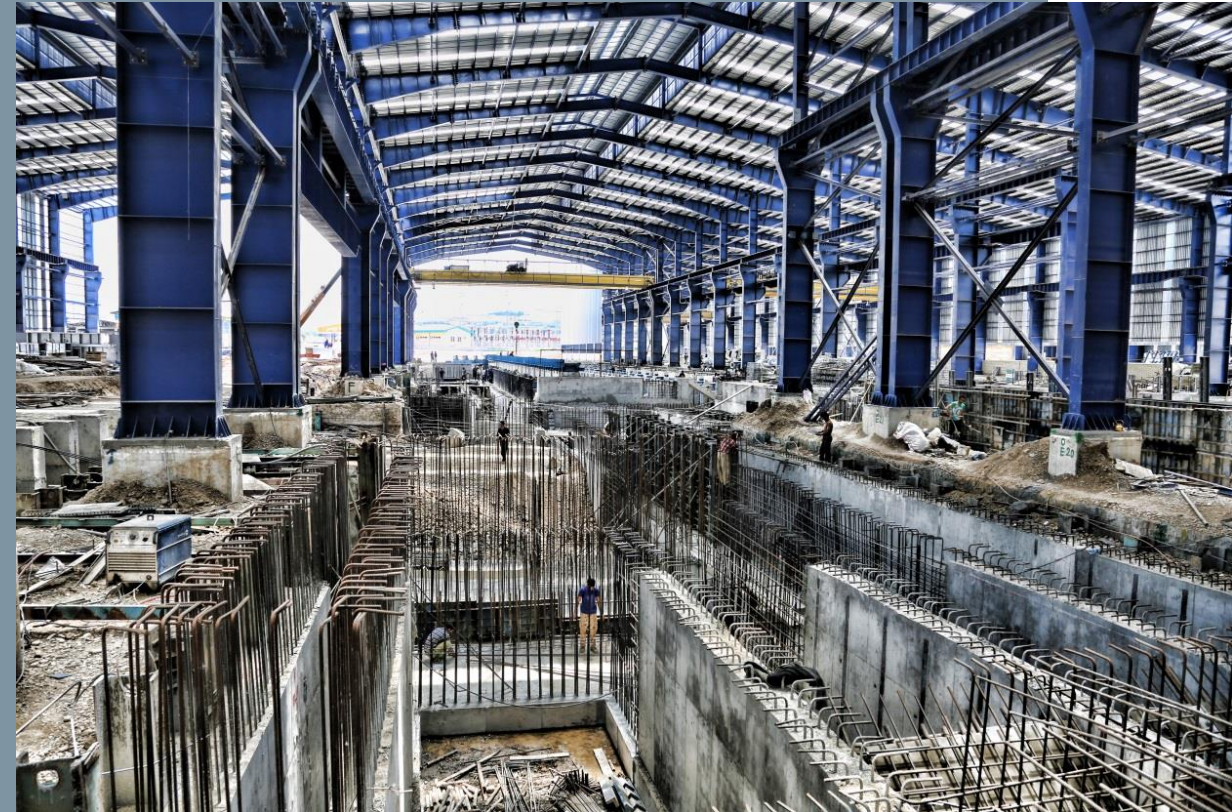


Quick achievement to the targeted performance figures for production and consumption issues

To ensure scheduled wise progress of the site activities and to obtain the full benefits of the designed system via correct execution of civil works and erection, CTS is always available to give site management and supervisory services starting from the very beginning of the project application.

The supervisory services given by our experienced engineers and technical staff during site activities, assure quick achievement to the targeted performance figures for production and consumption issues.

- Preparation of time schedules for greenfield and brownfield projects
- Preparation of site organization, site regulations and safety rules
- Final accounting of subcontractors
- Enforcing safety rules and site regulations
- Follow-up of progress and budget
- Assuring quality requirements
- Consistent coordination with customer



PROJECT (QA/QC) AND SITE MANAGEMENT

CTS answers the customer's requests consisting of investment planning, machinery and technical support with the low production costs and high flexibility which improves the quality of the finished products. Decreasing of production costs and manpower by considering of practical solutions, latest technology and manufacturing with the national and international standards are provided by CTS's targets which proceeds on its way are

- Revision of exist systems and if needed, to build up new systems according to the customer requirements
- Designing new products by means of R&D applications and technics for quality fabricating
- Execution of innovated techniques in the field of R&D studies on projects
- Application of known and developed quality procedures and requirement
- Manufacturing of high quality products considering customer satisfaction

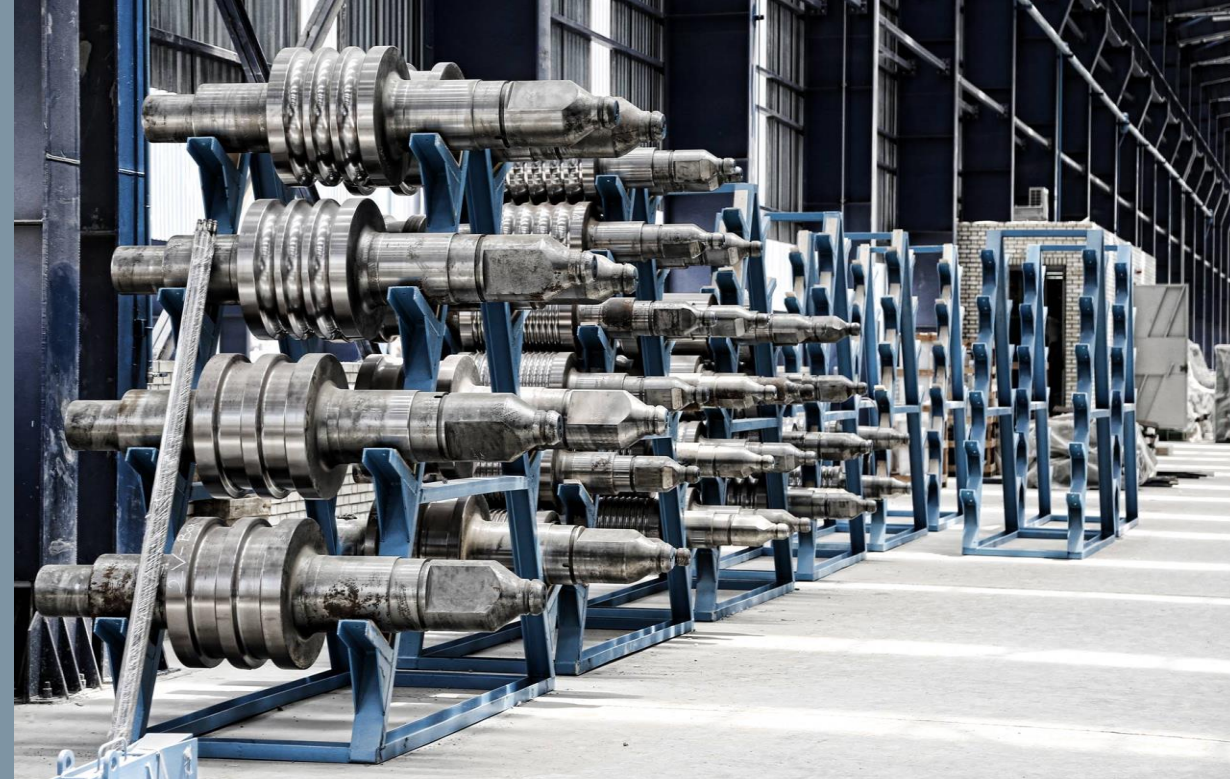


We guarantee the right function, perfect manufacturing and conformity to customer requirements

Auxiliary equipment and systems are to be designed according to the core production equipment sizing, plant production capacity, product type and quality, environmental regulations, geographical conditions and special interests of customer.

All the supplies and services of CTS are guaranteed for correct functioning, perfect manufacturing and suiting to customer needs for complete rolling mills, melt shops, revamping inquiries or single machinery and spare parts demands. Benefits for Spare Parts Services in CTS;

- Guaranteed availability
- Short delivery times
- Better planning security
- Reduced capital tie-up
- Lower warehousing costs
- Less maintenance work



Thank you.



www.ctsmakina.com.tr

LEGAL DISCLAIMER

This presentation contains valuable, proprietary property belonging to CTS MAKİNA DEMİR VE ÇELİK ÜRÜNLERİ SAN.TİC.A.Ş. or its affiliates (“the CTS GROUP”), and no licenses or other intellectual property rights are granted herein, nor shall the contents of this presentation form part of any sales contracts which may be concluded between the CTS GROUP companies and purchasers of any equipment and/or systems referenced herein. Please be aware that the CTS GROUP actively and aggressively enforces its intellectual property rights to the fullest extent of applicable law. Any information contained herein (other than publically available information) shall not be disclosed or reproduced, in whole or in part, electronically or in hard copy, to third parties. No information contained herein shall be used in any way either commercially or for any purpose other than internal viewing, reading, or evaluation of its contents by recipient and the CTS GROUP disclaims all liability arising from recipient’s use or reliance upon such information. Title in and to all intellectual property rights embodied in this presentation, and all information contained therein, is and shall remain with the CTS GROUP. None of the information contained herein shall be construed as legal, tax, or investment advice, and private counsel, accountants, or other professional advisers should be consulted and relied upon for any such advice.

All copyrightable text and graphics, the selection, arrangement, and presentation of all materials, and the overall design of this presentation are © CTS GROUP 2021. All rights reserved. No part of this information or materials may be reproduced, retransmitted, displayed, distributed, or modified without the prior written approval of Owner. All trademarks and other names, logos, and icons identifying Owner’s goods and services are proprietary marks belonging to the CTS GROUP. If recipient is in doubt whether permission is needed for any type of use of the contents of this presentation, please contact the CTS GROUP at info@ctsmakina.com.tr



www.ctsmakina.com.tr